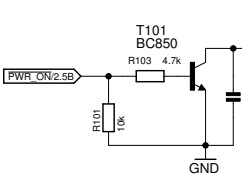
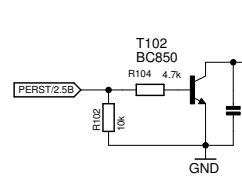


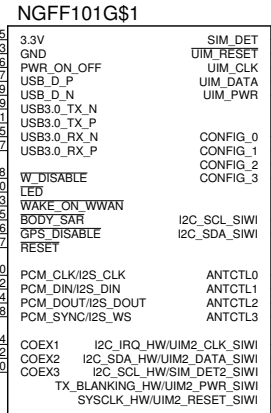
### PWR\_ON



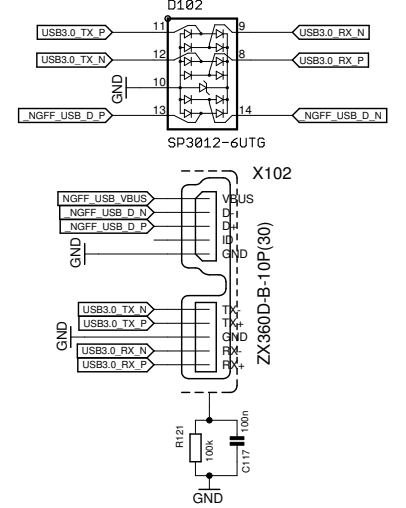
### NGFF reset



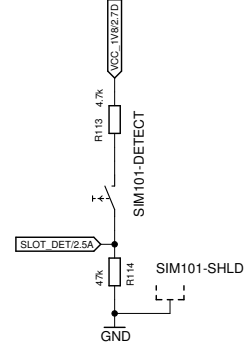
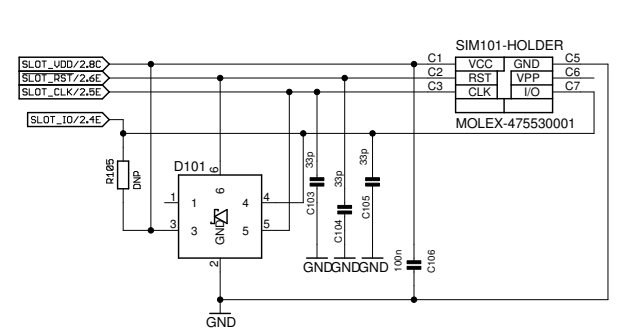
### NGFF Socket



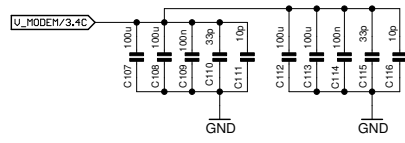
### USB3 conn + TUS array



### SIM Slot

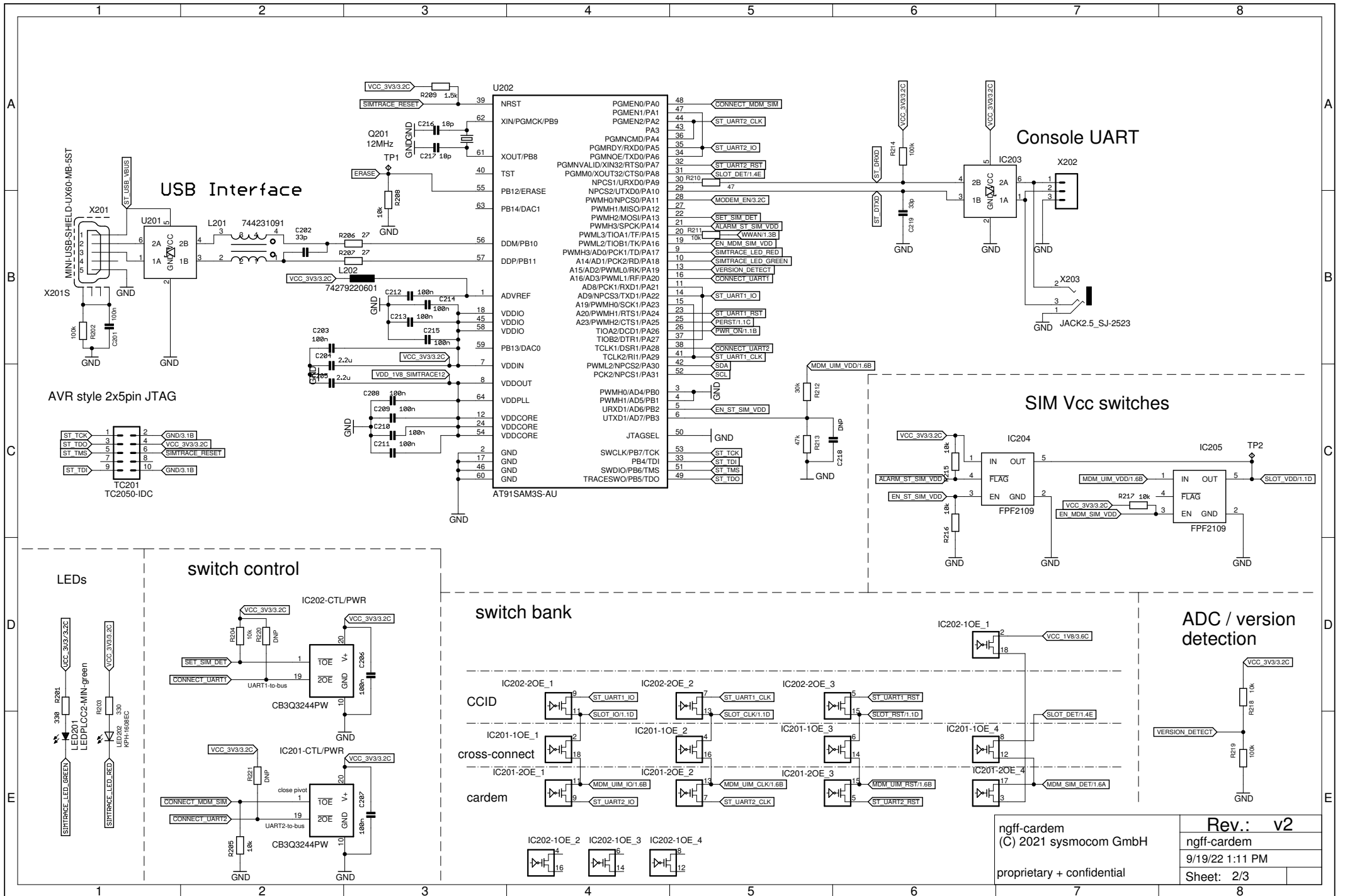


### Blocking Capacitors



### mech parts





### USB Interface

### Console UART

### SIM Vcc switches

### switch control

### switch bank

### ADC / version detection

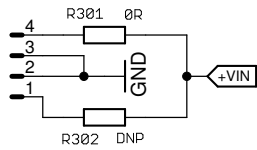
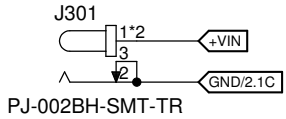
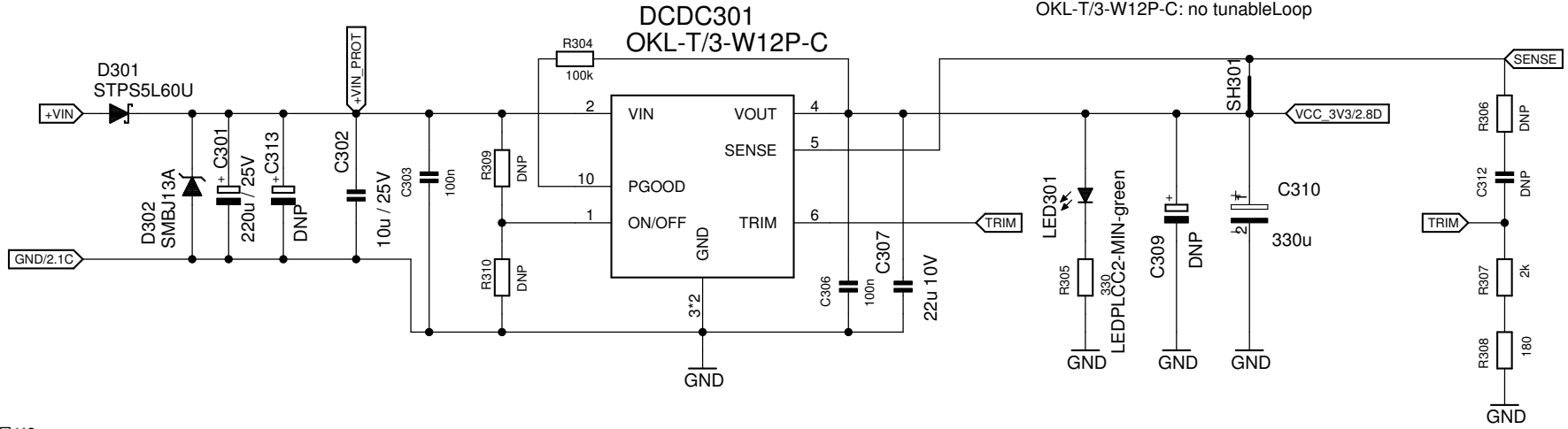
ngff-cardem  
 (C) 2021 systocom GmbH  
 proprietary + confidential

Rev.: v2  
 ngff-cardem  
 9/19/22 1:11 PM  
 Sheet: 2/3

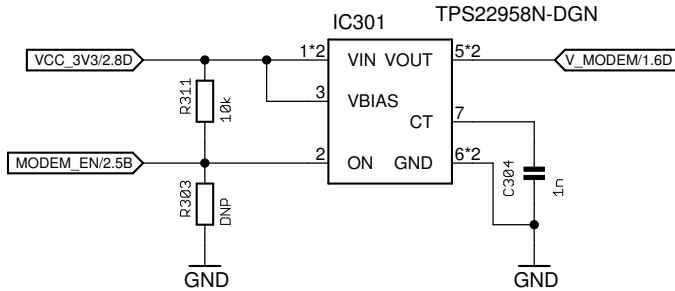
# 3.3V DC/DC converter

PVX003A0X3-SRZ: trim: 4.44kOhm  
 PVX003A0X3-SRZ: tunableLoop: R=180R; C=8200p  
 (max. dVout: 50mV; max. dIout: 2,5A)

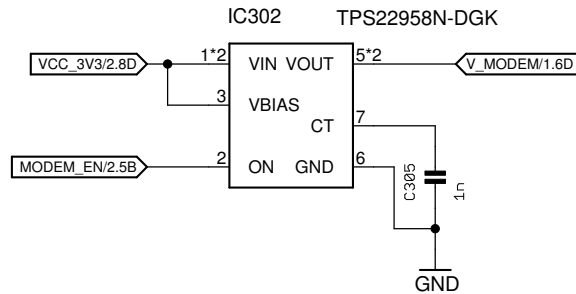
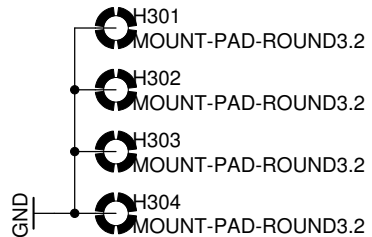
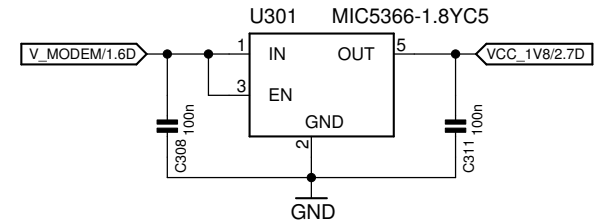
OKL-T/3-W12P-C: trim: 2.18kOhm  
 OKL-T/3-W12P-C: no tunableLoop



# modem load switch



# LDO 1V8



ngff-cardem  
 (C) 2021 sysmocom GmbH

proprietary + confidential

ngff-cardem	v2
9/19/22 1:11 PM	
Sheet: 3/3	