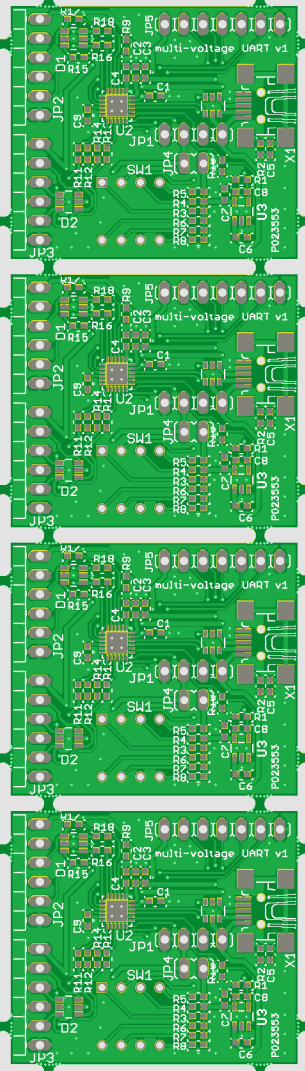
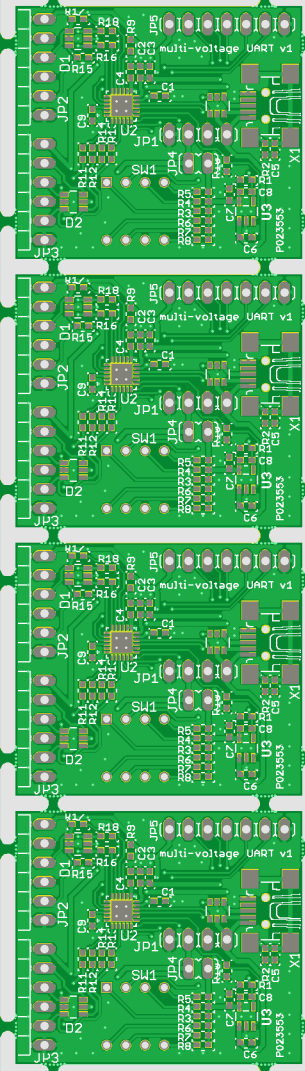
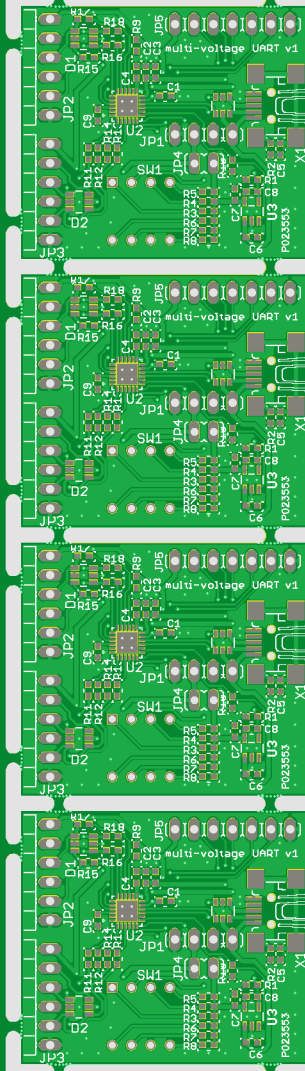
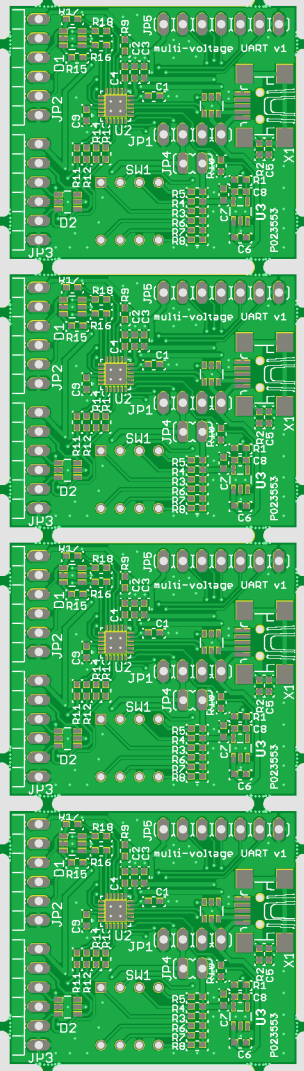


P023553 PCB view TOP (topview)

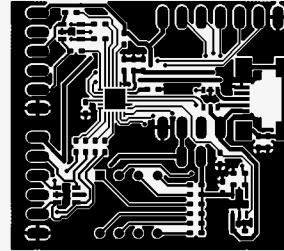
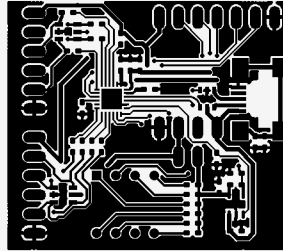
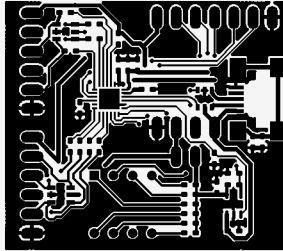
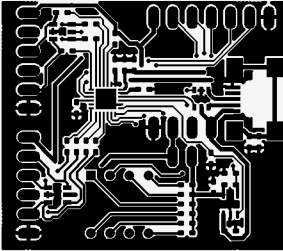
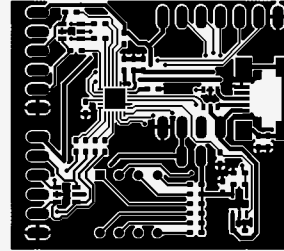
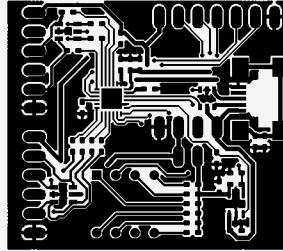
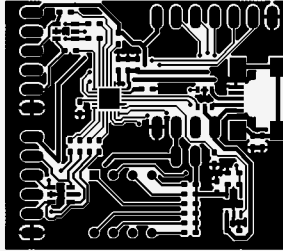
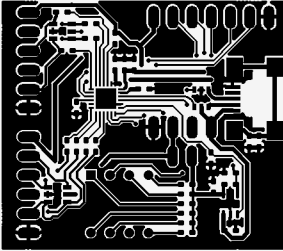
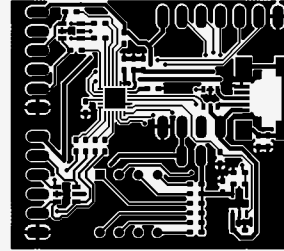
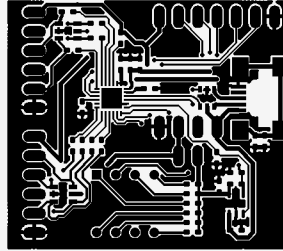
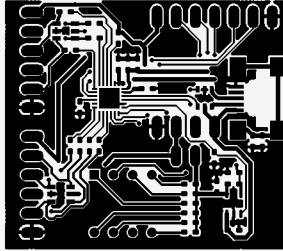
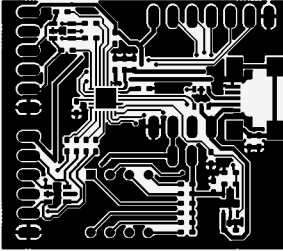
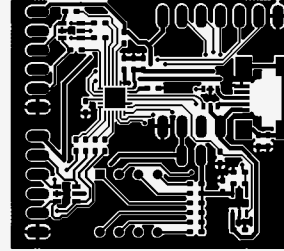
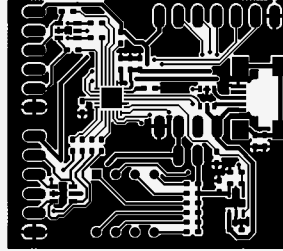
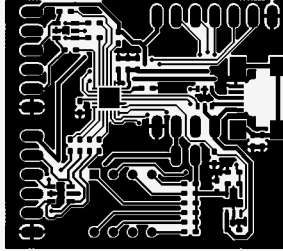
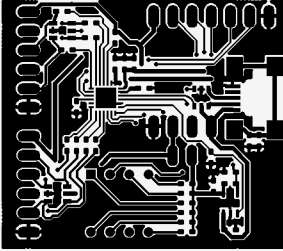
P023553



P023553

P023553 TOP layer Image (topview)

#



#

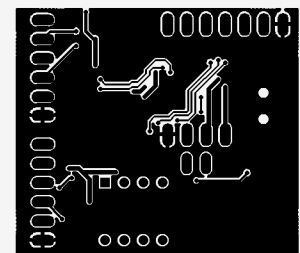
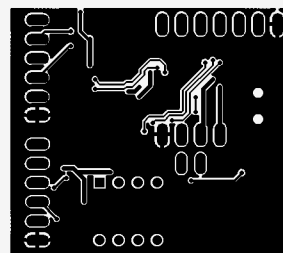
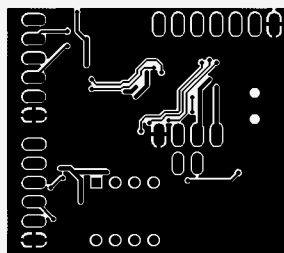
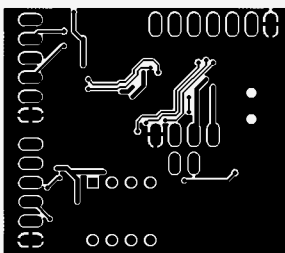
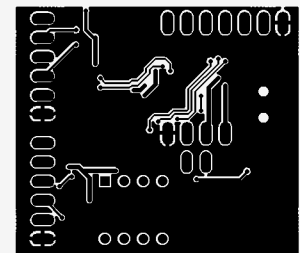
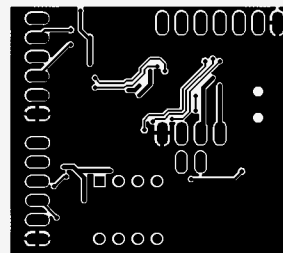
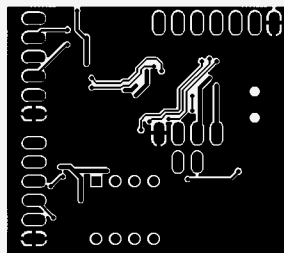
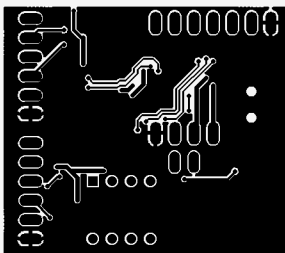
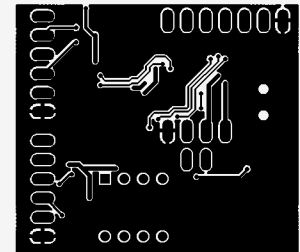
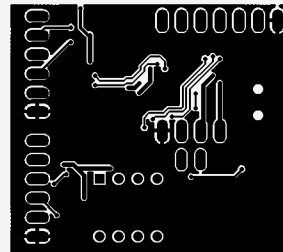
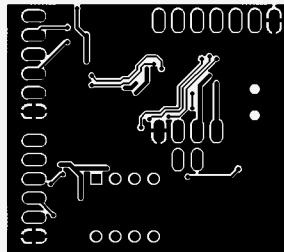
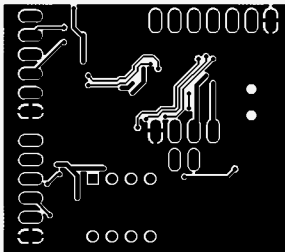
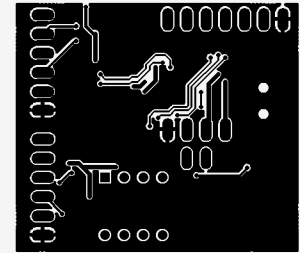
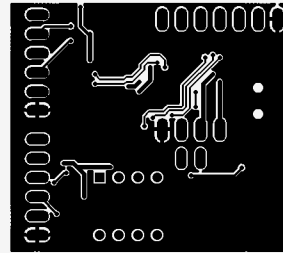
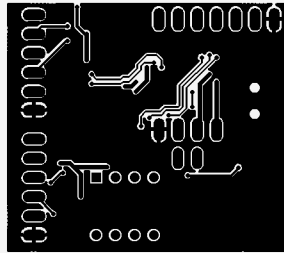
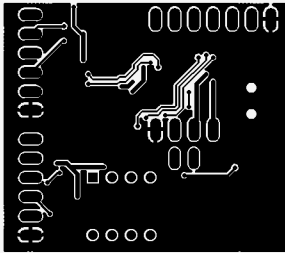
#

P023553

P023553 BOTTOM layer Image (topview)

#

#



b053223

#

#

P023553 PCB view BOTTOM (bottomview)

#

#

CC-BY-SA
multi-voltage UART v1
(C) 2016 Harald Welte
Mfg: sysmocom

CC-BY-SA
multi-voltage UART v1
(C) 2016 Harald Welte
Mfg: sysmocom

CC-BY-SA
multi-voltage UART v1
(C) 2016 Harald Welte
Mfg: sysmocom

CC-BY-SA
multi-voltage UART v1
(C) 2016 Harald Welte
Mfg: sysmocom

P023553

CC-BY-SA
multi-voltage UART v1
(C) 2016 Harald Welte
Mfg: sysmocom

CC-BY-SA
multi-voltage UART v1
(C) 2016 Harald Welte
Mfg: sysmocom

CC-BY-SA
multi-voltage UART v1
(C) 2016 Harald Welte
Mfg: sysmocom

CC-BY-SA
multi-voltage UART v1
(C) 2016 Harald Welte
Mfg: sysmocom

CC-BY-SA
multi-voltage UART v1
(C) 2016 Harald Welte
Mfg: sysmocom

CC-BY-SA
multi-voltage UART v1
(C) 2016 Harald Welte
Mfg: sysmocom

CC-BY-SA
multi-voltage UART v1
(C) 2016 Harald Welte
Mfg: sysmocom

CC-BY-SA
multi-voltage UART v1
(C) 2016 Harald Welte
Mfg: sysmocom

CC-BY-SA
multi-voltage UART v1
(C) 2016 Harald Welte
Mfg: sysmocom

CC-BY-SA
multi-voltage UART v1
(C) 2016 Harald Welte
Mfg: sysmocom

CC-BY-SA
multi-voltage UART v1
(C) 2016 Harald Welte
Mfg: sysmocom

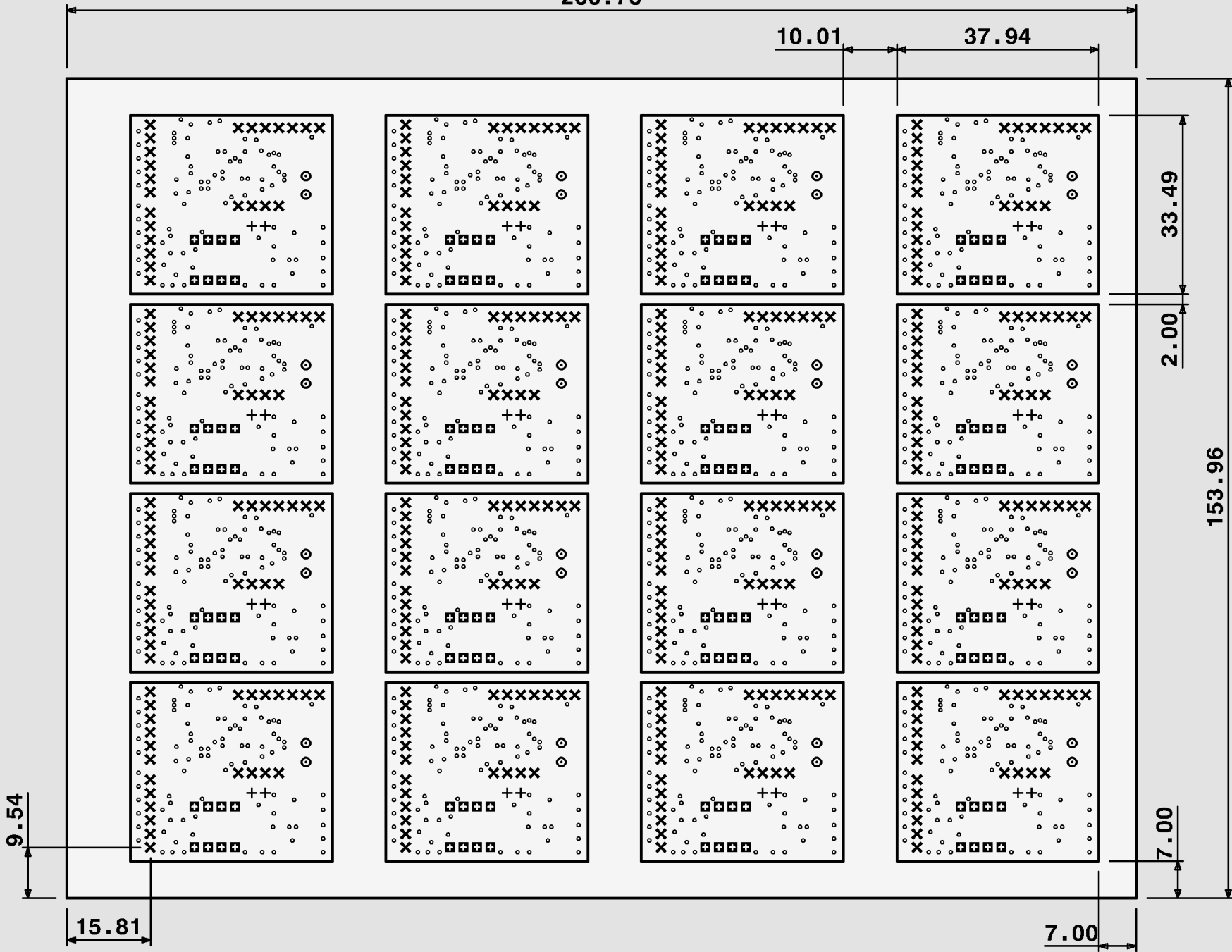
CC-BY-SA
multi-voltage UART v1
(C) 2016 Harald Welte
Mfg: sysmocom

P023553

#

P023553 PCB Mechanical view (topview)

200.76



Drill Report : Layer P023553-60

| Symbol | END.dia (mm) | Tooldia (*0.01mm) | number of Holes | spec.desc. Nibb(N) mill(M) | NPTH |
|--------|--------------|-------------------|-----------------|----------------------------|----------|
| • | 0.25 | 35 | 1392 | 0 | |
| ⊞ | 0.80 | 90 | 128 | 0 | |
| ⊙ | 0.90 | 90 | 32 | 0 | X |
| + | 0.90 | 100 | 32 | 0 | |
| × | 1.00 | 110 | 368 | 0 | |